



"Providing children and families with safety, stability and belonging"

Pathways Family Services Foster Care News

www.pathwaysfamilyservices.com
e-mail: general@pathwaysfamilyservices.com

February 2026

Volume 30, Issue 6



Pathways Accreditation will take place March 2nd to 4th

Training Reminders

January and February training calendars have been released. Caregivers can now self-register for winter instructor-led, and in-service training on PRIDE.

Please remember to complete the Suicide Awareness and Medication Administration courses if yours have expired! Thanks.



Pathways office will be closed Monday, February 16th for Family Day. Contact the on-call with any emergencies.

Indigenous Languages Corner

Cree

clothes
ayîwinîsa
eye WIN suh

hat
astôtîn
AHS toe tin

pants
mitâs
mit DAHS



Saulteaux

one
pěšik
PAY sik

two
nīs
nees

three
nihso
NIH so



Pronunciations are approximate. To hear a language spoken and for access to more words, download a language app to a tablet or smart phone. Apps used here are “Maskwacis Cree” and “Saulteaux.”

Winter Festivals

Flying Canoe Volant - lacitefranco.ca/en/flying-canoe-volant

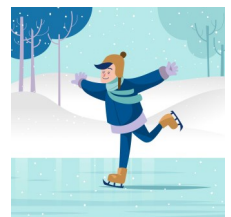
January 28 to 30 - Mill Creek Ravine & La Cite Francophone - 8627 - 91 Street

Join one of Edmonton's great winter celebrations! The Flying Canoë Volant is a creative, interactive, and cultural event that celebrates local history and everything that is great about a long winter's night. Loosely based on the legend of the Flying Canoe, and on French-Canadian, First Nation, and Métis traditions, the Flying Canoë Volant invites you for a nighttime adventure in Edmonton's French Quarter and along the illuminated trails of the Mill Creek Ravine.

Silver Skate Festival - silverskate.ca

February 6 to 16 - Sir Wilfred Laurier Park (new location this year)

The Silver Skate Festival is a free 10-day family-oriented festival that combines culture, art, education, sport, and recreation. Featured are a snow sculpture garden, roving performers on the folk trail, nightly first sculpture burn, and Indigenous pavilion in the Heritage Village which includes installations, stories, and a Winter Walking Ceremony.



February 2026



**Pathways.Family
Services**

2314-31 Street.NW?

Edmonton?AB?T2E.2T5

Phone: 346-044-8000

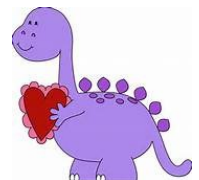
Sun Mon Tue Wed Thu Fri Sat

1 2 3 4 5 6 7

*Direct
Deposit
Date*

8 9 10 11 12 13 14

Payroll
Cutoff at
Noon



15 16 17 18 19 20 21



Office
Closed

Submit February Child/Youth
Month End Reports via
Pathways Hub

22 23 24 25 26 27 28

*Direct
Deposit
Date*

Payroll
Cutoff at
Noon